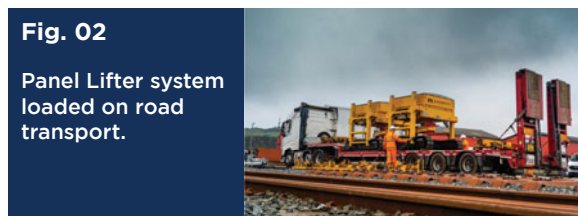
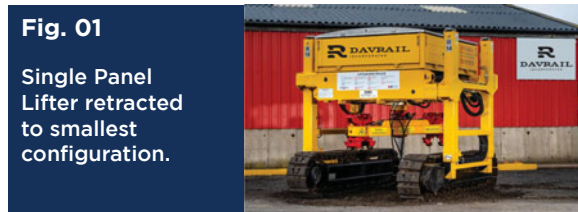


Panel Lifter Specifications

Features and Benefits

- **20,000 lb lifting capability per Panel Lifter**, multiple units increase lifting capability; for example three units would lift approximately 60,000 lb.
- **Fully certified to work across the rail network**, including under live Overhead Line Equipment (OLE), Any Line Open working (ALO), and Catenary.
- A fully loaded Panel Lifter System **can turn in any direction while in motion**.
- Variable track width allows access and **use in narrow environments** like bridges, tunnels, and narrow right of way.
- Ideal for **removing and installing panels** on main line, repairs, and challenging new builds or crossings
- Can **easily cross multiple tracks** without damaging the rail.
- Can grab **all gauges** of track.
- **Compact size and maneuverability** enables easy transportation, rapid deployment, and demobilization.
- A panel lifter system of two machines can be used to **move panel lengths up to 90ft** long. More machines can be added to move longer panels.



Machine Data	Imperial	Metric
Vehicle Height	100 in (Min) 145 in (Max)	2542 mm (Min) 3692 mm (Max)
Vehicle Width	97 in (Min) 152 in (Max)	2465 mm (Min) 3865 mm (Max)
Vehicle Length	113 in	2874 mm
Vehicle Tare Weight	10,692 lbs	4.85 tonnes
Between Tracks	57 in (Min) 112 in (Max)	1448 mm (Min) 2850 mm (Max)
Main Ram Travel	29.5 in	750 mm
Main Ram Side Shift	+/- 4 in, 8 in total	+/- 100 mm, 200mm total
Leg Vertical Ram	45 in	1150 mm
Leg Horizontal Ram	2x27.5 in = 55 in Total	2x700 mm = 1400 mm Total
Vehicle Speed	0.7 mph (Low) 1.6 mph (High)	1.1 km/h (Low) 2.6 km/h (High)
Lifting Capacity	19,841 lbs	9 tonnes
Gradient	1:5, 20%, 11° (Alarm Setting)	
Noise Levels (High Engine Speed)	Sound Pressure Level @ 1m:LpA 86 dB(A) Sound Power Level: LwA 97 dB(A)	

Engine Data	Imperial	Metric
Engine Type	Kubota O3 Series - V2403-CR-E5	
Cylinders	4 In-Line	
Power Output	32 kW, 43 bhp @ 2,100 rpm	
Idle Speed	900 rpm	
Half Speed	1500 rpm	
Full speed	2100 rpm	
Emissions	EU Stage V, Tier 4 Final	
Alternator	2-volt 40 amp	
Battery	Type 017 - 12V, 90 Ah, 720A CCA.	
Oil Type	Shell Rimula RT4X 15w-40w	
Oil Capacity	2.51 US gallons	9.5 litres
Coolant Capacity	2.25 US gallons	8.5 litres
Coolant	Valvoline Maxlife 50/50	
Fuel Type	Diesel	
Fuel Tank	26.4 US gallons	100 litres

Hydraulic Data	Imperial	Metric
System Pressure	160 Bar	
Leg Ram Pressure	140 Bar	
Oil Type	Shell Naturelle HFE 46 - Synthetic Biodegradable	
Tank Capacity	16 gallons (Min) 53 US gallons (Max)	60 litres (Min) 200 litres (Max)
Pump	43.98 cc ³ /rev - 23 gallons/ min @ 2,100 rpm	43.98 cc ³ /rev - 88 Litres/ min @ 2,100 RPM

Dimensions

